

**PRAGATHI COLLEGE OF PHYSICAL EDUCATION**  
(Affiliated to Andhra University) Ardhannapalem (R.V), Baligattam jn  
Kothavalasa (Md), Vizianagaram (Dist) - 535183 Ph; 08966-264376

---

**COLLEGE PHOTOS**





## ANATOMY AND PHYSIOLOGY LAB

Pragathi College of Physical Education has a well-equipped Anatomy and Physiology lab with consist of various charts, models, & various DVD's related to Anatomy and Physiology. The foundation also has a well-equipped Anatomy Museum.



## **PSYCHOLOGY LAB**

Pragathi college of Physical Education pledge Psychology Lab which caters to the students of DPED and BPED and MPED for Excellence in learning Sports Psychology. The students get practical knowledge in Sports Psychology, the students also are guided by renowned teachers who excelled in psychology, visiting faculties also take up classes for our students in psychology.



## SPORTS & TEST AND MEASUREMENT

The College well equipped Sports Training and Test and measurement Lab which are utilised by our students on a regular basis.

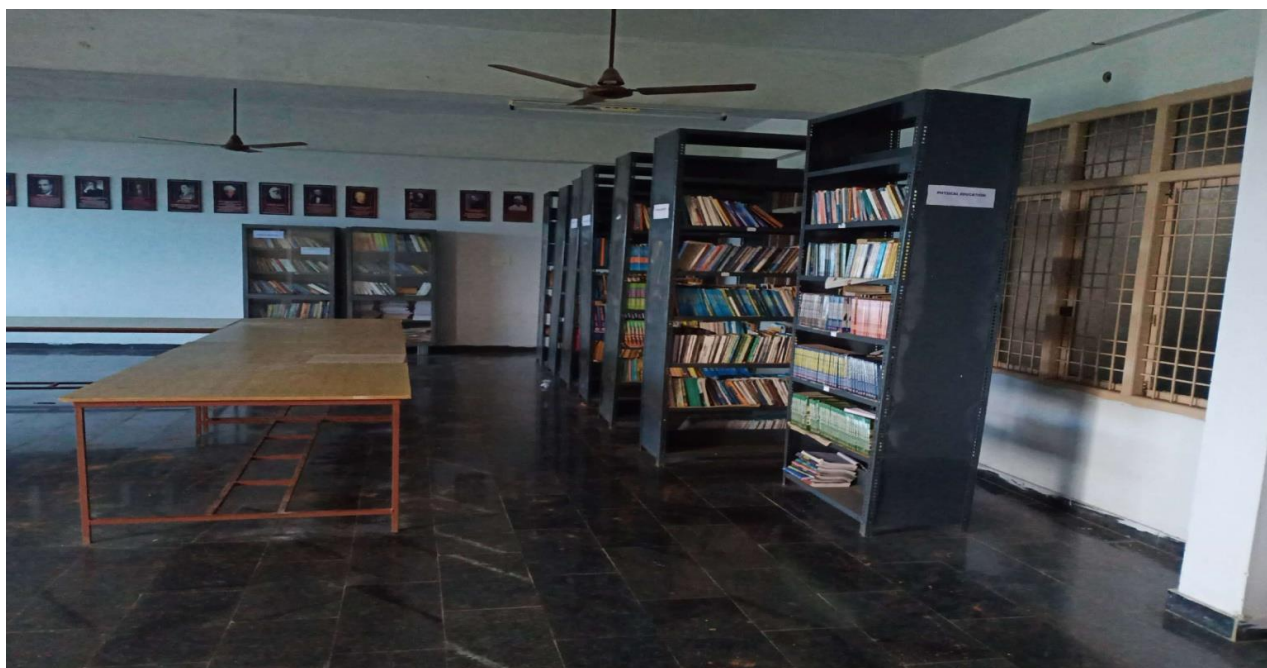


## **LIBRARY ROOM**

Pragathi College of Physical Education library is equipped to meet essential academic and intellectual needs of its students, and college library has well equipped with ample sitting arrangements for students and staffs. The library has good number of Books, Periodicals, Journals, magazines and Encyclopaedias related to Physical Education and Sports. The Pragathi college of Physical Education library has over 2502 books, 10 Journals and other books 402 ,books subject papers 1250,Reference books 360,



CS Scanned with CamScanner



CS Scanned with CamScanner

## GYM – 26 station s multy gym

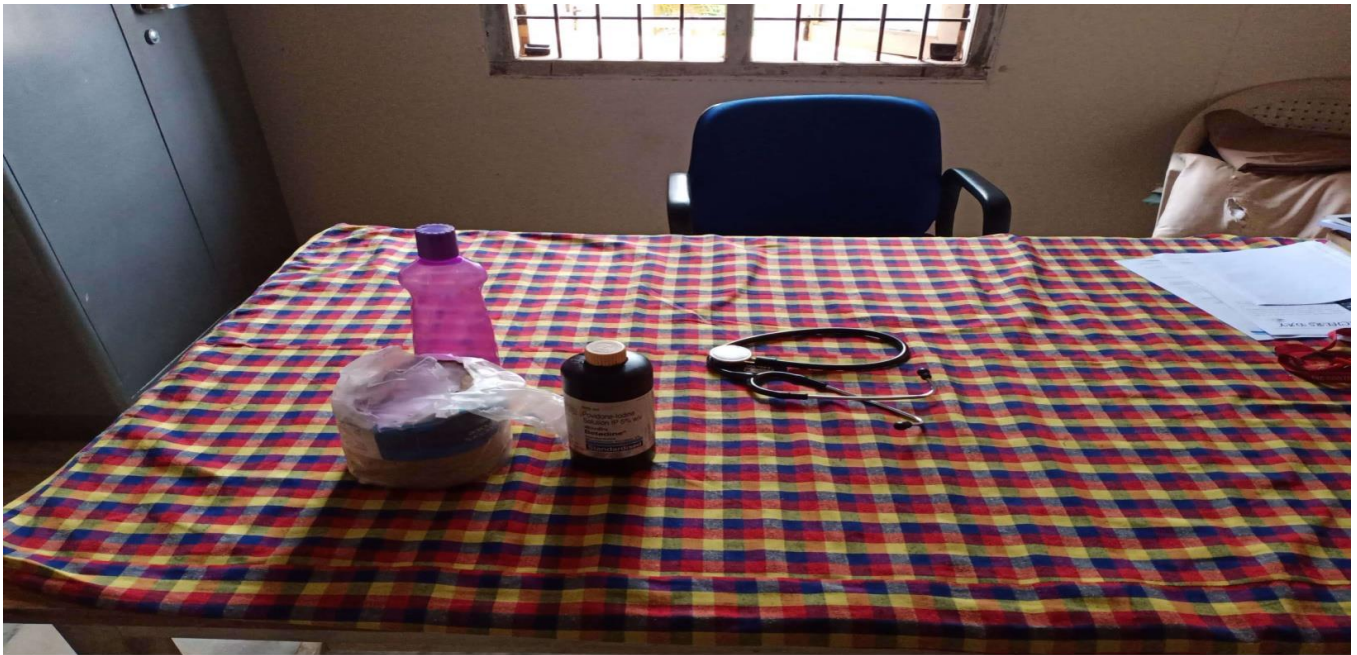


CS Scanned with CamScanner



CS Scanned with CamScanner

## FIST AID ROOM



Scanned with CamScanner



Scanned with CamScanner



## **COMPUTER LAB**

The College has fully equipped computerised lab for the students. Around 100 numbers of computers are allotted for students for practical purposes. Specialised staffs take up practical as well as theory classes for the students.

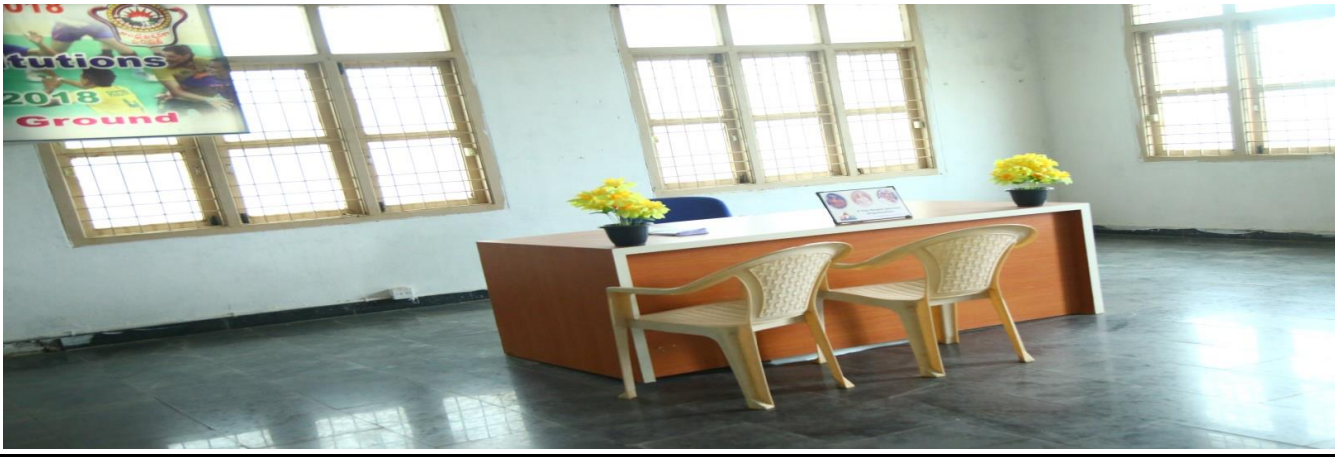


CS Scanned with CamScanner



CS Scanned with CamScanner

## STAFF ROOM



## SEMANIOR HALL



Scanned with CamScanner



Scanned with CamScanner

## CLASS ROOMS

### Class room – 1



### Class room – 2



**Class room – 3**



**Class room – 4**



## Class room – 5



CS Scanned with CamScanner

## Class room – 6



CS Scanned with CamScanner

Class room – 7



Class room – 8



## CLASS ROOM – 9



## CLASS ROOM – 10

